

Eagle



Update

Yoncalla, Oregon

Volume 8, Issue 4

December 2022

www.yoncalla.k12.or.us

Seaside Leadership Weekend

For the first time in three years leadership had the opportunity to go back to Seaside for the statewide leadership conference. This is an event where every school council in the state is invited for speakers, idea shares, and an all around great time. We had an absolute blast bonding as a class by going to the beach, playing games, and finding some snow on the way home. Our kids also excelled at making new friends and getting tons of ideas to bring back to our school district. Special shout out to Mrs. Ross for helping chaperone and driving. #squadgoals.



Inside this issue

Guest Opinion	2
Career Spotlight	3
Student of the Month	3
Mrs Patterson's 3rd Grade Class.....	4
College Spotlight	5
Eagle Exploration.....	6
1984 Covers	7-10
Basketball is Back	11



Guest Opinion by Zaiden Simon

The wild forests are disappearing. According to many sources on the Web, in 2015, an estimated 50 percent of wild forests had disappeared. This number is currently at more than 71 percent. At this rate, by 2030, we will only have 10 percent of the world's wild forests left. This isn't all about "Save the Turtles," or even "Save the Pandas," whose species are becoming endangered as well as certainly use up the forests more than the turtles do. It's becoming 'save the forest, the animals that live in the forest, and even vegetation (which is food) that grows in the forests!

What?! Slightly more than 28.5 percent of the world's wild forests [as of time of writing] are left. This means more than just forests; the loss of trees and lush environment also means the loss of animals, food, and other things, too! For example, chocolate grows originally from cocoa beans. Where do cacao beans come from? Cacao trees! And where are they found? Most Cacao trees are from the southeastern parts of Mexico to the Amazon Basin. Without those trees, there won't be any chocolate. Of course other things would disappear too, like parrots, some variants of other birds, and but everyone likes chocolate enough to give some care to it if it were to disappear forever by 2050 AD (about 27 years from now). PS: it's more than just chocolate at stake. Deforestation, which is the cutting of trees, contributes to global warming, messes with the water cycle, causes soil erosion and also causes desertification; so if you don't want the environment of WALL-E to match the environment here, we should do something about forests being cut down.

What can we do? Next time you go out logging, or anything wood-cutting related, you can instead of planting one tree for every one cut down, you could plant three and make the amount of trees gradually escalate. You can, by reading this, tell your friends that chocolate is more important than they think, and prove it, too. You can now tell people that if we don't stop with the rate we're going at, the world may soon run out of forests, and therefore places for animals to live.

Yoncalla School District Priorities

1. Each student will enjoy positive, engaging learning environments.
2. Each child will possess the knowledge and skills necessary to be successful in post secondary education and careers, and the self-reliance to be a productive citizen.
3. A strong sense of community is recognized and nurtured among all stakeholders
4. Facilities and finances are managed effectively and efficiently for the benefit of each child.



YHS Career Spotlight



Plumber

- Plumbers assemble, install and repair pipes, water and drainage systems like sinks, tubs, and water heaters.
- They locate and mark the position of pipes for repair, removal, or install.
- They cut openings in walls and floors to accommodate pipes or fittings, using hand tools and a threading machine.
- Plumbers also bend pipe using a machine or by hand and work with various metals, glass, vitrified clay, and plastic.
- They use hand tools and power tools. Plumbers may weld fixtures to structures.



Journey Average
\$38.09 per hour
Starting Average
\$17.14 per hour



How do I become one?
Attend a JTC, Community College, or Apprentice with a company



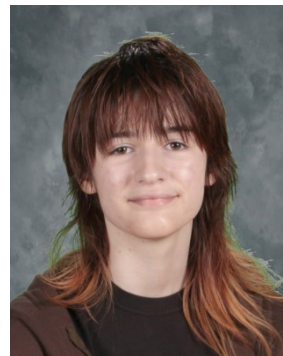
Get Educated
4 year apprenticeship (8,000 hours of on the job training + 144 hours of "school" per year)
*Lane CC, Chemetka CC

Middle/High School Students of the Month

Chloe Berning-Colton
Yoncalla Middle School
November



Mace Hall
Yoncalla High School
December



Mrs. Patterson's 3rd Grade Class



This is the Third-Grade class at the toy train display in Drain. The kids loved the details of each train and the communities around them. It was a fun field trip.



YHS College Spotlight



Oregon TECH

Oregon Technology or Oregon Institute of Technology, is Oregon's ONLY Polytechnic College.

This university focuses on programs in STEM and offers 47 different programs for students to explore.

Being a Polytechnic college, they require students to enter with four years of mathematics, and students should have B's or higher in all core classes.

They are known for their medical technology programs like Sonography or X-Ray Technician in addition to their Engineering and Computer Coding programs.



Tuition
\$12,122
Housing and Meals
\$9,348 to \$10,647



Where?
Klamath Falls, Oregon
200 miles from Yoncalla OR
Wilsonville, Oregon
133 miles from Yoncalla

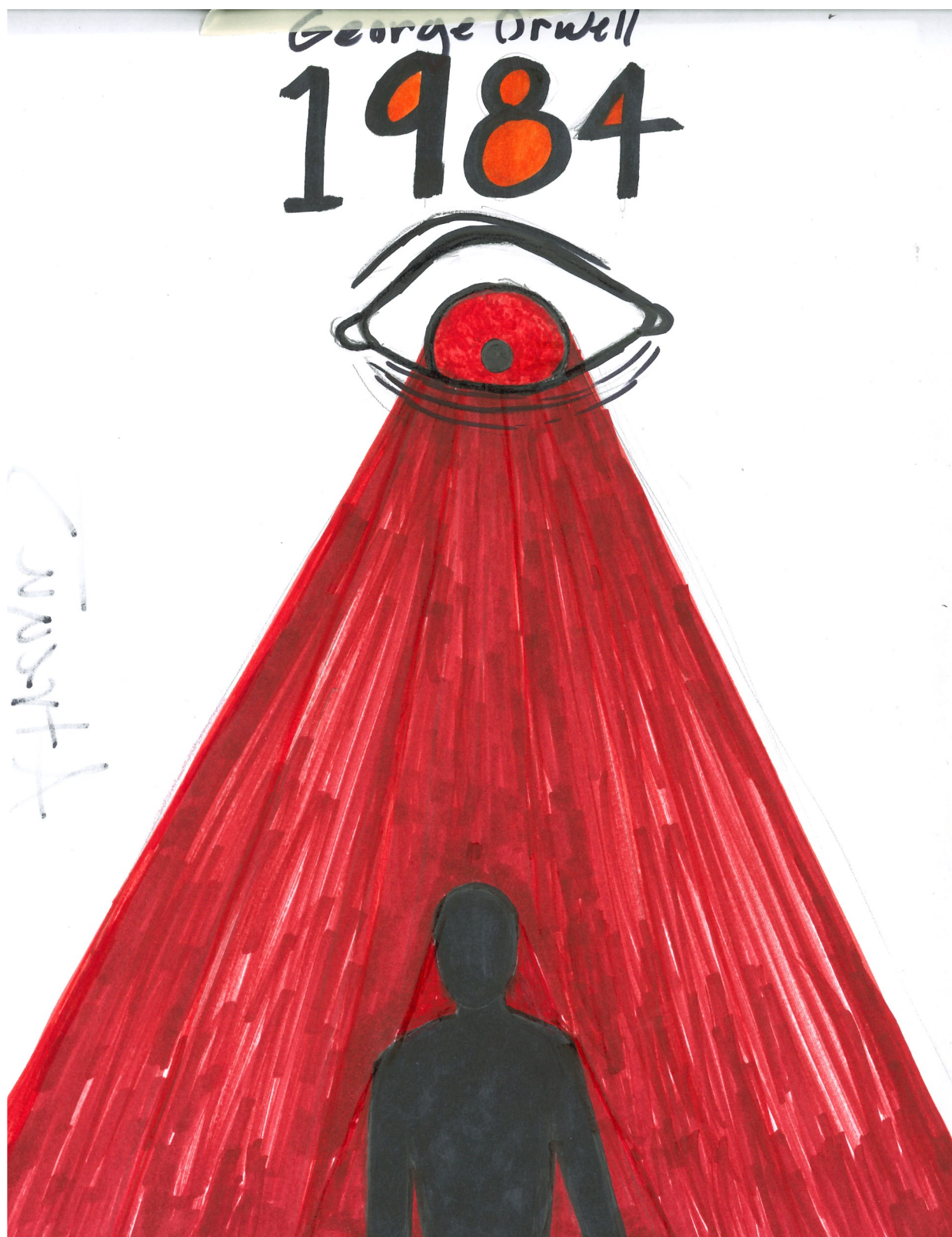


Eagle Exploration

The High School spends the two days before Thanksgiving break on what is called Eagle Exploration. Monday, all students attend a college to explore and find out more about the college, the services offered, and programs available. On Tuesday, different “classes” are offered for the students to have fun with. This year, boardgames, a basketball clinic, cooking, bracelet making, and hiking were some of the classes offered.

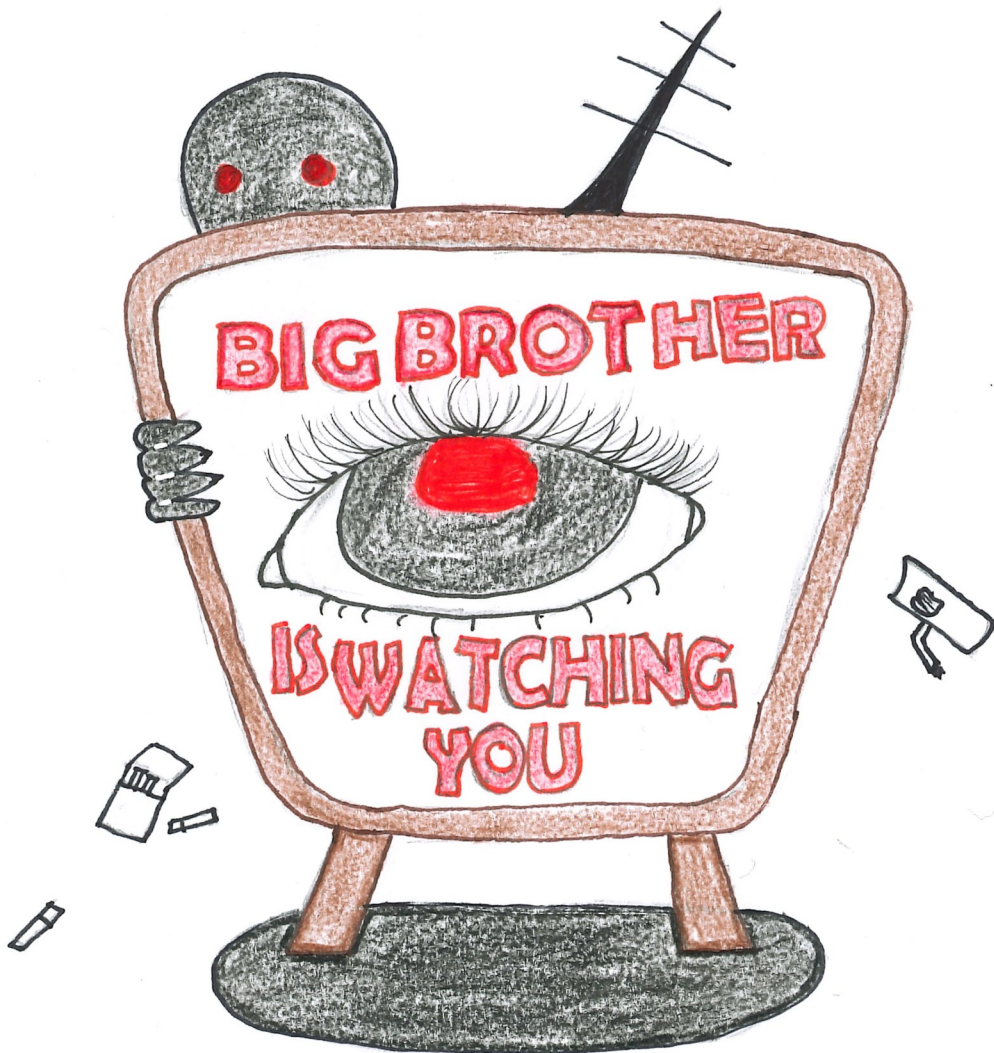


The senior class has been reading the classic 1984 in English. One of their assignments was to draw a cover for the book with the themes in the novel reflected in the cover. Here is a sample of the creations.

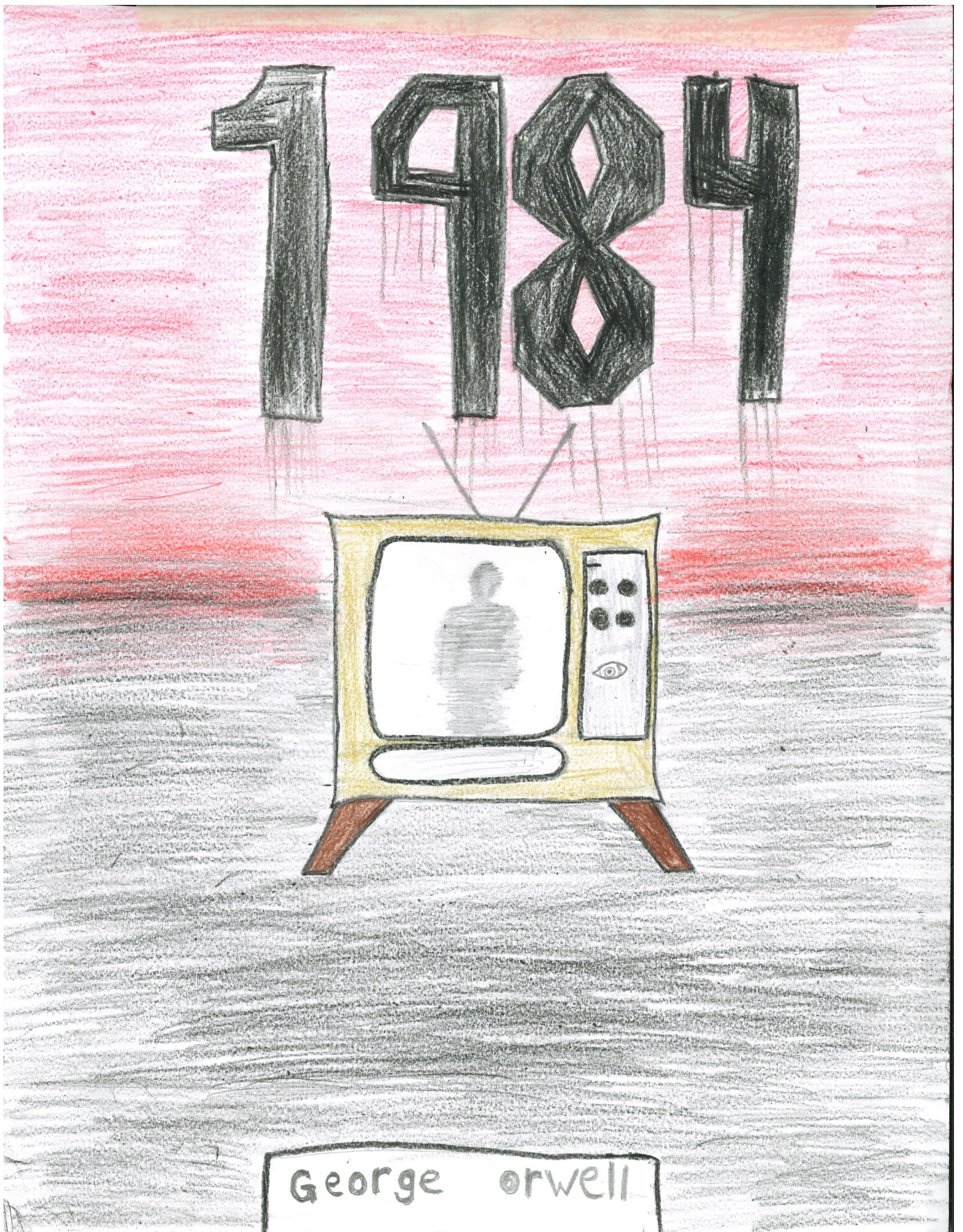




1984



GEORGE ORWELL



Basketball is BACK!

